



Ref No: C.1

Category: Couplings

Description: Automatic, standard length, with loop and fixing eyelet

Price (£): 2.95



Ref No: C.2

Category: Couplings

Description: Automatic, cranked shank, with loop and eyelet (currently out of stock)

Price (£): 3.00



Ref No: C.3

Category: Couplings

Description: Automatic, French Hornby type, shorter, with loop and eyelet

Price (£): 3.00



Ref No: C.4

Category: Couplings

Description: Automatic, long-shank for No. 2 coaches and wagons, with loop and eyelet (no centring spring wire)

Price (£): 3.75



Ref No: C.5

Category: Couplings

Description: Automatic, loop only

Price (£): 1.10

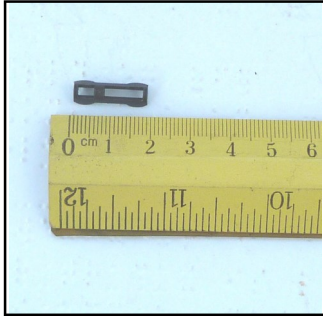


Ref No: C.6

Category: Couplings

Description: Drop-link, standard straight, with short drop loop and fixing eyelet. Link length 11/16-inch [18mm]

Price (£): 4.25



Ref No: C.7

Category: Couplings

Description: Drop-link Coupling, Link only, short.

Price (£): 2.25

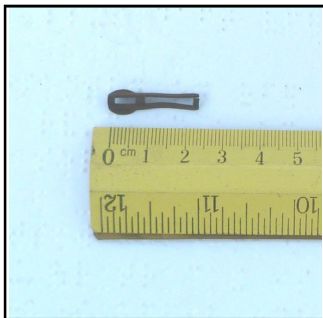


Ref No: C.8

Category: Couplings

Description: Drop-link, straight with longer loop and fixing eyelet. Link length 15/16-inch [24mm]

Price (£): 4.25



Ref No: C.9

Category: Couplings

Description: Drop-link Coupling, Link only, long

Price (£): 2.25

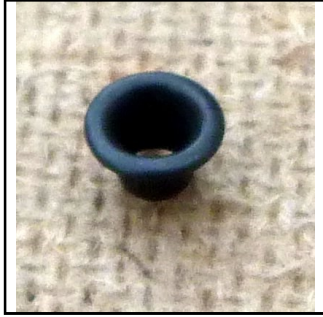


Ref No: C.10

Category: Couplings

Description: Drop-link, straight, with longer loop, both nickel-plated, with non-plated rivet

Price (£): 4.75



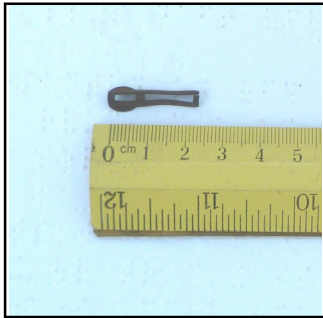
Ref No: C.11
Category: Couplings
Description: Eyelet (rivet), blackened. Pack of 10

Price (£): 2.75



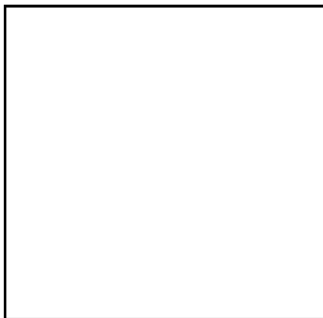
Ref No: C/Ref.
Category: Couplings
Description: Loop (ring) - wire - see 'Automatic - Loop' (C5)

Price (£):



Ref No: C/Ref.
Category: Couplings
Description: Link, long and short, for Drop-link Couplings -see 'Drop-link'

Price (£):



Ref No:
Category:
Description: end of Hornby Couplings listing

Price (£):