

**Ref No:** LT.1

**Category:** Loco & Tender parts (other than buffers and cou-

**Description:** Axle, knurled. Numerous specifications



**Price (£):** Priced according to specification

---

**Ref No:** LT.2

**Category:** Loco & Tender parts (other than buffers and cou-

**Description:** Axle, threaded. Numerous specifications



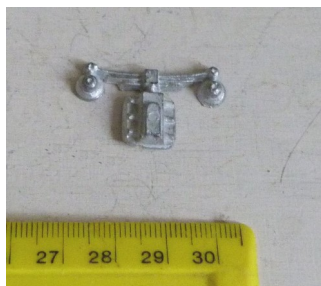
**Price (£):** Priced according to specification

---

**Ref No:** LT.3

**Category:** Loco & Tender parts (other than buffers and cou-

**Description:** Axle Carrier, (Axle Box), casting, B-L Mogul Tender (LNER)



**Price (£):** 2.00.

---

**Ref No:** LT.4

**Category:** Loco & Tender parts (other than buffers and cou-

**Description:** Axle Carrier (Axle Box), casting, numerous patterns as yet unidentified. The one illustrated is believed to be for L.M.C. Tender



**Price (£):** 2.00.

---



**Ref No:** LT.5

**Category:** Loco & Tender parts (other than buffers and cou-

**Description:** Axle Nut, round, slotted head. 7BA thread

**Price (£):** 1.50

---



**Ref No:** LT.6

**Category:** Loco & Tender parts (other than buffers and cou-

**Description:** Bogie Carrier, 2-part metal assembly

**Price (£):** 7.50.

---



**Ref No:** LT.7

**Category:** Loco & Tender parts (other than buffers and cou-

**Description:** Bush, brass, tri-angular, 5/16-in. sides (11mm)

**Price (£):** 0.75.

---



**Ref No:** LT.8

**Category:** Loco & Tender parts (other than buffers and cou-

**Description:** Chimney, large, 1 in. height, (25.4mm) central hole

**Price (£):** 2.50.

---



**Ref No:** LT.9

**Category:** Loco & Tender parts (other than buffers and cou-

**Description:** Chimney, 7/8-in. height, (22mm) no top band, Central hole. LMC Midland type

**Price (£):** 2.00.

---



**Ref No:** LT.10

**Category:** Loco & Tender parts (other than buffers and cou-

**Description:** Chimney, large 1-inch height (25.4mm), with embossed bands, central hole

**Price (£):** 1.75.

---



**Ref No:** LT.11

**Category:** Loco & Tender parts (other than buffers and cou-

**Description:** Chimney, extra large, 1-1/2in. height, (30mm) 2-lug fixing (Out of stock)

**Price (£):** 2.50.

---



**Ref No:** LT.12

**Category:** Loco & Tender parts (other than buffers and cou-

**Description:** Chimney, squat with square base. 2-lug fixing. Bing 'Apollo'

**Price (£):** 2.50.

---



**Ref No:** LT.13  
**Category:** Loco & Tender parts (other than buffers and cou-  
**Description:** Chimney, double, squat

**Price (£):** 2.50.

---



**Ref No:** LT.14  
**Category:** Loco & Tender parts (other than buffers and cou-  
**Description:** Chimney, single, squat, central short spigot

**Price (£):** 2.00.

---



**Ref No:** LT.15  
**Category:** Loco & Tender parts (other than buffers and cou-  
**Description:** Chimney, single,  $\frac{3}{8}$ -in. height, (10mm) central spigot

**Price (£):** 2.25.

---



**Ref No:** LT.16  
**Category:** Loco & Tender parts (other than buffers and cou-  
**Description:** Control Knob, flat head, milled edge. 6BA

**Price (£):** 1.75.

---



**Ref No:** LT.17

**Category:** Loco & Tender parts (other than buffers and cou-

**Description:** Control Knob, flat head, milled edge, 7BA

**Price (£):** 1.75.

---



**Ref No:** LT.18

**Category:** Loco & Tender parts (other than buffers and cou-

**Description:** Control Knob, 'onion-shape' 7BA thread (G1). Available in steel or brass.

**Price (£):** 2.00.

---



**Ref No:** LT.19

**Category:** Loco & Tender parts (other than buffers and cou-

**Description:** Control Knob, 'onion-shape' 9BA thread (G-0) Used on automatic brake rod.

**Price (£):** 1.75.

---



**Ref No:** LT.20

**Category:** Loco & Tender parts (other than buffers and cou-

**Description:** Control Knob, spherical, 7BA, 9BA

**Price (£):** 2.00.

---



**Ref No:** LT.21  
**Category:** Loco & Tender parts (other than buffers and cou-  
**Description:** Control Knob, mushroom-shaped, with milled ring. 9BA

**Price (£):** 2.50.

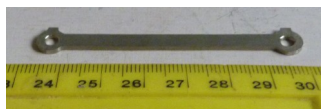
---



**Ref No:** LT.22  
**Category:** Loco & Tender parts (other than buffers and cou-  
**Description:** Control Knob, long hexagonal, steel, 6BA

**Price (£):** 2.00.

---



**Ref No:** LT.23  
**Category:** Loco & Tender parts (other than buffers and cou-  
**Description:** Coupling Rod, 2-in. centres. (50.8mm) B-L

**Price (£):** 2.00.

---



**Ref No:** LT.24  
**Category:** Loco & Tender parts (other than buffers and cou-  
**Description:** Coupling Rod, 2½-in. centres (63mm). B-L and Bing standard 4-4-0 types

**Price (£):** 3.50.

---

**Ref No:** LT.25

**Category:** Loco & Tender parts (other than buffers and cou-

**Description:** Coupling Rod, B-L 6-coupled type. (0-6-0, 2-6-4T, 4-6-0 etc) . Price each



**Price (£):** 5.00.

---

**Ref No:** LT.26

**Category:** Loco & Tender parts (other than buffers and cou-

**Description:** Coupling Rod, B-L 6-coupled (Scotsman, Montrose). Price each



**Price (£):** 5.00.

---

**Ref No:** LT.27

**Category:** Loco & Tender parts (other than buffers and cou-

**Description:** Coupling Rod, Marklin 6-coupled type , large bosses. Price each



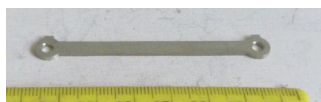
**Price (£):** OUT OF STOCK

---

**Ref No:** LT.28

**Category:** Loco & Tender parts (other than buffers and cou-

**Description:** Coupling Rod, Bing Midland Compound, 2P. Price each



**Price (£):** 3.00.

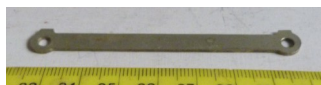
---



**Ref No:** LT.29

**Category:** Loco & Tender parts (other than buffers and cou-

**Description:** Coupling Rod, 2- $\frac{3}{4}$ -in. centres (57mm) (B-L long wheelbase 0-4-0). Price each



**Price (£):** 3.00.

---

**Ref No:** LT.30

**Category:** Loco & Tender parts (other than buffers and cou-

**Description:** Coupling Rod, 2- $\frac{3}{8}$ ths-inch centres, (60mm) bowed, square ends, no oilers. Bing 'Apollo' type.



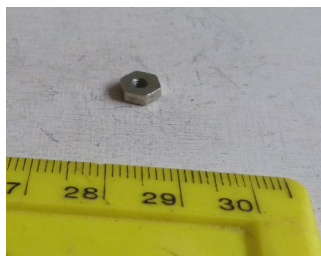
**Price (£):** 6.00.

---

**Ref No:** LT.31

**Category:** Loco & Tender parts (other than buffers and cou-

**Description:** Crank Nut, hexagonal, 7BA thread



**Price (£):** 1.50.

---

**Ref No:** LT.32

**Category:** Loco & Tender parts (other than buffers and cou-

**Description:** Crank Pin,  $\frac{1}{2}$ -in. length, (12.7 mm) with slotted head. B-L longer type



**Price (£):** 1.50.

---





**Ref No:** LT.33

**Category:** Loco & Tender parts (other than buffers and cou-

**Description:** Crank Pin, 7/16-in. length, (11mm) with slotted head. B-L medium length

**Price (£):** 1.50.

---



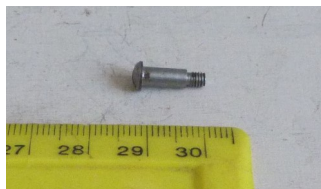
**Ref No:** LT.34

**Category:** Loco & Tender parts (other than buffers and cou-

**Description:** Crank Pin, 5/16-in. length, (8mm) with slotted head. B-L shorter type

**Price (£):** 1.50.

---



**Ref No:** LT.35

**Category:** Loco & Tender parts (other than buffers and cou-

**Description:** Crank Pin, 5/8-in. length (16 mm), flat slotted head. B-L type

**Price (£):** 1.50.

---



**Ref No:** LT.36

**Category:** Loco & Tender parts (other than buffers and cou-

**Description:** Crank Pin, 3/8-in. length, (10 mm), slotted head, deeper shoulder B-L type

**Price (£):** 1.50.

---



**Ref No:** LT.37

**Category:** Loco & Tender parts (other than buffers and cou-

**Description:** Crank Pin, steel, without thread. Various

**Price (£):** Priced according to specification

---



**Ref No:** LT.38

**Category:** Loco & Tender parts (other than buffers and cou-

**Description:** Cylinder casting. B-L Royal Scot

**Price (£):** 6.50.

---



**Ref No:** LT.39

**Category:** Loco & Tender parts (other than buffers and cou-

**Description:** Cylinder casting. B-L Compound

**Price (£):** 5.50.

---



**Ref No:** LT.40

**Category:** Loco & Tender parts (other than buffers and cou-

**Description:** Cylinder Casing, B-L Compound, tinplate, s/hand.

**Price (£):** 3.50

---



**Ref No:** LT.41

**Category:** Loco & Tender parts (other than buffers and cou-

**Description:** Cylinder, B-L Mogul non-live-steam

**Price (£):** 10.00

---



**Ref No:** LT.42

**Category:** Loco & Tender parts (other than buffers and cou-

**Description:** Cylinder, cast, solid. Unidentified application.

**Price (£):** 7.50

---



**Ref No:** LT.43

**Category:** Loco & Tender parts (other than buffers and cou-

**Description:** Cylinder End and Slide Bars. Unidentified application.

**Price (£):** 8.50

---



**Ref No:** LT.44

**Category:** Loco & Tender parts (other than buffers and cou-

**Description:** Dome, extra large, 1-3/16-in. dia. (30mm)

**Price (£):** 2.50.

---



**Ref No:** LT.45

**Category:** Loco & Tender parts (other than buffers and cou-

**Description:** Dome, helmet shape, B-L/Bing Duke of York, etc. No spigot.

**Price (£):** 1.75.

---



**Ref No:** LT.46

**Category:** Loco & Tender parts (other than buffers and cou-

**Description:** Dome with Whistle Lever. G-2 (?) LNWR type. 15/16-in. dia.(23.5 mm), threaded spigot

**Price (£):** 2.50.

---



**Ref No:** LT.47

**Category:** Loco & Tender parts (other than buffers and cou-

**Description:** Dome, small, 7/8. dia. (22,5 mm), threaded spigot

**Price (£):** 1.50.

---



**Ref No:** LT.48

**Category:** Loco & Tender parts (other than buffers and cou-

**Description:** Dome, squat, 7/8-in.dia.(22.5 mm), central spigot not threaded

**Price (£):** 1.50.

---



**Ref No:** LT.49

**Category:** Loco & Tender parts (other than buffers and cou-

**Description:** Dome, deep, 15/16-in. max dia.(23.8 mm), threaded spigot

**Price (£):** 1.50.

---



**Ref No:** LT.50

**Category:** Loco & Tender parts (other than buffers and cou-

**Description:** Drawbar Plate, B-L Mogul, metal

**Price (£):** 2.50.

---



**Ref No:** LT.51

**Category:** Loco & Tender parts (other than buffers and cou-

**Description:** Handrail Knob, steel, B-L J39 and 4F type. With washer and nut

**Price (£):** 2.50.

---



**Ref No:** LT.52

**Category:** Loco & Tender parts (other than buffers and cou-

**Description:** Handrail Knob, steel, B-L Prince Charles

**Price (£):** 1.50.

---



**Ref No:** LT.53

**Category:** Loco & Tender parts (other than buffers and cou-

**Description:** Handrail Knob, brass, Bing 'Duke of York' 'stand-off' type

**Price (£):** 1.75.

---



**Ref No:** LT.54

**Category:** Loco & Tender parts (other than buffers and cou-

**Description:** Lamp, loco. with cast square spigot. Bing type, G1-G2

**Price (£):** 1.75.

---



**Ref No:** LT.55

**Category:** Loco & Tender parts (other than buffers and cou-

**Description:** Lamp, loco, with thin metal spigot and wire handle (possibly B-L, or Marklin-Bing?)

**Price (£):** 2.00.

---

**Ref No:** LT.56

**Category:** Loco & Tender parts (other than buffers and cou-

**Description:** Nut, axle - see 'Axle' Nut, crank - see 'Crank'

**Price (£):**

---



**Ref No:** LT.57  
**Category:** Loco & Tender parts (other than buffers and cou-  
**Description:** Piston & Connecting Rod, 3-in. centres, long piston, tapered rod

**Price (£):** 5.00.

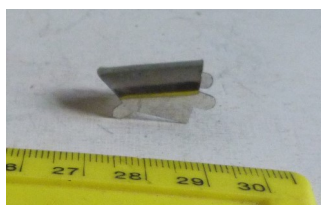
---



**Ref No:** LT.58  
**Category:** Loco & Tender parts (other than buffers and cou-  
**Description:** Piston & Connecting Rod, 3-in. centres, short piston, tapered rod

**Price (£):** 5.00.

---



**Ref No:** LT.59  
**Category:** Loco & Tender parts (other than buffers and cou-  
**Description:** Steam Pipe Cover, tinplate

**Price (£):** 1.75.

---



**Ref No:** LT.60  
**Category:** Loco & Tender parts (other than buffers and cou-  
**Description:** Steps, cast, L.M.C. Tender and Tank

**Price (£):** 5.00

---





**Ref No:** LT.61  
**Category:** Loco & Tender parts (other than buffers and cou-  
**Description:** Tender Draw Bar, B-L long shank with pin

**Price (£):** 3.50.

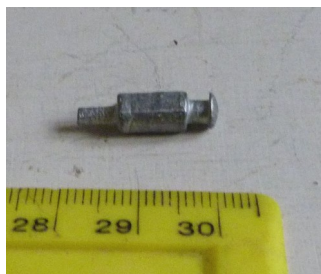
---



**Ref No:** LT.62  
**Category:** Loco & Tender parts (other than buffers and cou-  
**Description:** Tender Fall Plate, deep curved, Bing & B-L. OUT of STOCK

**Price (£):** 4.00.

---



**Ref No:** LT.63  
**Category:** Loco & Tender parts (other than buffers and cou-  
**Description:** Tender Vent, B-L style, straight barrel

**Price (£):** 1.50.

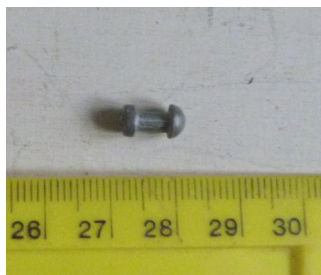
---



**Ref No:** LT.64  
**Category:** Loco & Tender parts (other than buffers and cou-  
**Description:** Tender Vent, B-L Mogul, hook shape, small

**Price (£):** 1.25.

---



**Ref No:** LT.65  
**Category:** Loco & Tender parts (other than buffers and cou-  
**Description:** Tender Vent, straight barrel with small domed cover

**Price (£):** 1.25.

---



**Ref No:** LT.66  
**Category:** Loco & Tender parts (other than buffers and cou-  
**Description:** Trailing Pony, B-L Flying Scotsman (pressing only, no wheels). LIMITED AVAILABILITY

**Price (£):** 9.50.

---



**Ref No:** LT.67  
**Category:** Loco & Tender parts (other than buffers and cou-  
**Description:** Front Pony, B-L Mogul (frame only) LIMITED AVAILABILITY

**Price (£):** 8.50.

---



**Ref No:** LT.68  
**Category:** Loco & Tender parts (other than buffers and cou-  
**Description:** Valve Gear complete. B-L Royal Scot (Out of stock)

**Price (£):** 22.00.

---



**Ref No:** LT.69

**Category:** Loco & Tender parts (other than buffers and cou-

**Description:** Valve Gear complete, B-L Flying Scotsman (Out of stock)

**Price (£):** 25.00.

---



**Ref No:** LT.70

**Category:** Loco & Tender parts (other than buffers and cou-

**Description:** Whistle, brass, Bing 0-6-0T (bifurcated)

**Price (£):** 1.50.

---

**Ref No:**

**Category:**

**Description:** end of Non-Hornby Loco & Tender spares list - please select other pages as required

**Price (£):**

---